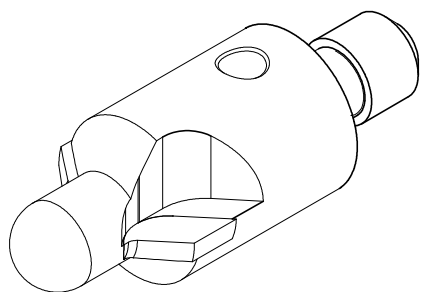


PCD 2fl Countersink Integral Pilot (mm)

Body Diameter (+/-0.76)	Pilot Diameter (-0.025)	CSK Angle (+/-0.5)	Thread shank	cat# 100°	cat# 130°
10	3.00	100/130	M6x1.0	CIP2010300	CIP2210300
12	3.00	100/130	M6x1.0	CIP2012300	CIP2212300
14	3.00	100/130	M8x1.0	CIP2014300	CIP2214300
17	4.00	100/130	M8x1.0	CIP2017400	CIP2217400
19	6.00	100/130	M8x1.0	CIP2019600	CIP2219600
22	8.00	100/130	M8x1.0	CIP2022800	CIP2222800
25	8.00	100/130	M8x1.0	CIP2025800	CIP2225800



**PCD C'sink
With Integral Pilot**



Materials:	SCALE: NTS	<p>This drawing is The property of TELCON DIAMOND And may only be Copied or passed To a third party With our permission.</p>
Steel ; PCD		
CAT. NO.	Unless specified Tolerances are in Accordance with: DIN ISO 2768-m	
By Table		