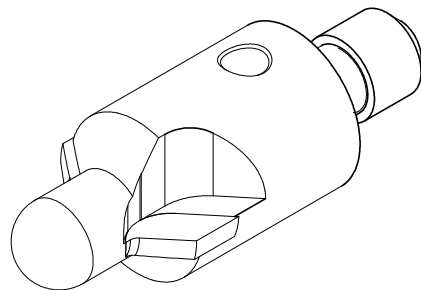


Carbide Tipped 2fl Countersink Integral Pilot (Inch)

Body Diameter (+/- .03)	Pilot Diameter (-.001)	CSK Angle (+/- 0.5)	Thread shank	cat# 100°	cat# 130°
3/8	0.125	100/130	1/4"-28	CIPC2004125	CIPC2204125
3/8	0.128	100/130	1/4"-28	CIPC2004128	CIPC2204128
7/16	0.156	100/130	1/4"-28	CIPC2005156	CIPC2205156
7/16	0.187	100/130	1/4"-28	CIPC2005187	CIPC2205187
1/2	0.125	100/130	1/4"-28	CIPC2006125	CIPC2206125
1/2	0.128	100/130	1/4"-28	CIPC2006128	CIPC2206128
1/2	0.239	100/130	1/4"-28	CIPC2006239	CIPC2206239
5/8	0.191	100/130	1/4"-28	CIPC2008191	CIPC2208191



C.T C'sink With Integral Pilot			
Materials:	Steel ; Carbide	SCALE: NTS	<p>This drawing is The property of TELCON DIAMOND And may only be Copied or passed To a third party With our permission.</p>
CAT. NO.	By Table	 Unless specified Tolerances are in Accordance with: DIN ISO 2768-m	