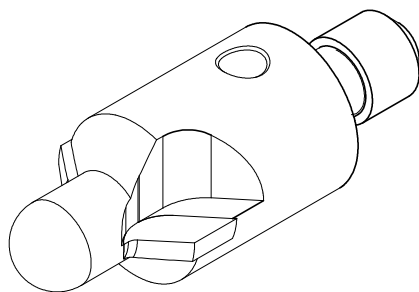


Carbide Tipped 2fl Countersink Integral Pilot (mm)

| Body Diameter (+/-0.76) | Pilot Diameter (-0.025) | CSK Angle (+/-0.5) | Thread shank | cat# 100° | cat# 130° |
|----------------------------|----------------------------|-----------------------|-----------------|-------------|-------------|
| 10 | 3.00 | 100/130 | M6x1.0 | CIPC2010300 | CIPC2210300 |
| 12 | 3.00 | 100/130 | M6x1.0 | CIPC2012300 | CIPC2212300 |
| 14 | 3.00 | 100/130 | M8x1.0 | CIPC2014300 | CIPC2214300 |
| 17 | 4.00 | 100/130 | M8x1.0 | CIPC2017400 | CIPC2217400 |
| 19 | 6.00 | 100/130 | M8x1.0 | CIPC2019600 | CIPC2219600 |
| 22 | 8.00 | 100/130 | M8x1.0 | CIPC2022800 | CIPC2222800 |
| 25 | 8.00 | 100/130 | M8x1.0 | CIPC2025800 | CIPC2225800 |



**C.T C'sink
With Integral Pilot**



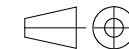
Materials:

Steel ; Carbide

CAT. NO.

By Table

SCALE: NTS



Unless specified
Tolerances are in
Accordance with:
DIN ISO 2768-m

This drawing is
The property of
TELCON DIAMOND
And may only be
Copied or passed
To a third party
With our permission.