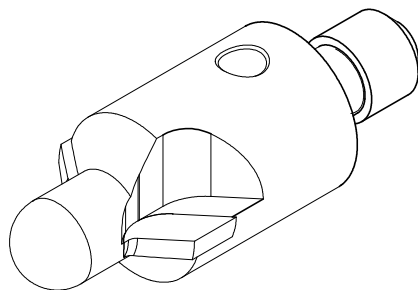

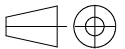



PCD 2fl Countersink Integral Pilot (Inch)					
Body Diameter (+/-0.03)	Pilot Diameter (-.001)	CSK Angle (+/-0.5)	Thread shank	cat# 100°	cat# 130°
3/8	0.125	100/130	1/4"-28	CIP2004125	CIP2204125
3/8	0.128	100/130	1/4"-28	CIP2004128	CIP2204128
7/16	0.156	100/130	1/4"-28	CIP2005156	CIP2205156
7/16	0.187	100/130	1/4"-28	CIP2005187	CIP2205187
1/2	0.125	100/130	1/4"-28	CIP2006125	CIP2206125
1/2	0.128	100/130	1/4"-28	CIP2006128	CIP2206128
1/2	0.239	100/130	1/4"-28	CIP2006239	CIP2206239
5/8	0.191	100/130	1/4"-28	CIP2008191	CIP2208191
5/8	0.25	100/130	1/4"-28	CIP2008250	CIP2208250
3/4	0.312	100/130	3/8"-24	CIP2010312	CIP2210312
7/8	0.312	100/130	3/8"-24	CIP2012312	CIP2212312
1	0.312	100/130	7/16"-20	CIP2014312	CIP2214312
1.1/4	0.312	100/130	7/16"-20	CIP2018312	CIP2218312



PCD C'sink With Integral Pilot		TELCON 	
Materials:	Steel ; PCD	SCALE: NTS	This drawing is The property of TELCON DIAMOND And may only be Copied or passed To a third party With our permission.
CAT. NO.	By Table	 	
		Unless specified Tolerances are in Accordance with: DIN ISO 2768-m	