

CVD Router - Case study

Test parameters

Customer: IL, Aerospace

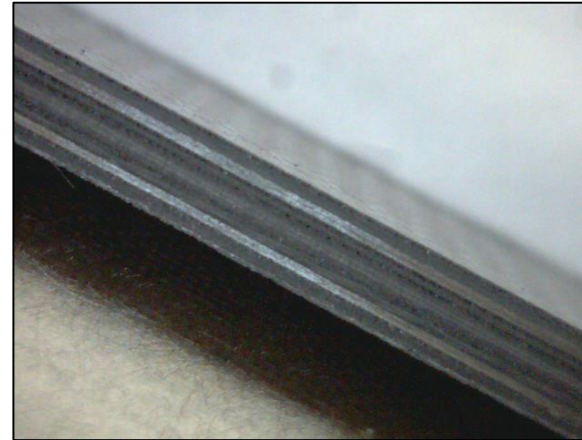
CVD Router 3/8

Cutting speed: 4,000 RPM;

Feed: 1300 mm/min; roughing
1600 mm/min; finishing

Coolant: Flood coolant

CFRP: 787 I beam part 4-7 mm thickness



Summary:

End-mill ran 100 meters in material with no delamination to the satisfactory of the customer.

